

# RFID Implementation



**University of Kentucky Medical Center**  
**Chris Petter**  
**Director, Materials Management**

# Why

- Patient safety
- Recall and event reporting purposes
- Rental expenses in excess of \$400,000
- Survey indicated no need to rent
- Assist in determining need for additional equipment and actual numbers required
- First of many phases
  - Supply tracking
  - Patient tracking
  - Staff tracking

# Vision Snapshot of UK Bladder Scanner

The screenshot displays the Ekahau Vision web interface within a Mozilla Firefox browser window. The browser's address bar shows the URL `http://172.21.11.164:8560/`. The interface features a navigation bar with icons for Desktop, Find, Rules, Events, Reports, and Tag Management. The user is logged in as 'admin'.

The main content area is titled 'ACTIVE SEARCH RULES [1] - BLADDER SCANNER'. It shows a search rule configuration with 'Item Group' set to 'None' and 'Value' set to 'Bladder Scanner'. Below this, there are options to 'Match All' or 'Match Any' search results, and buttons for 'Save Search Rules' and 'Clear Search Rules'.

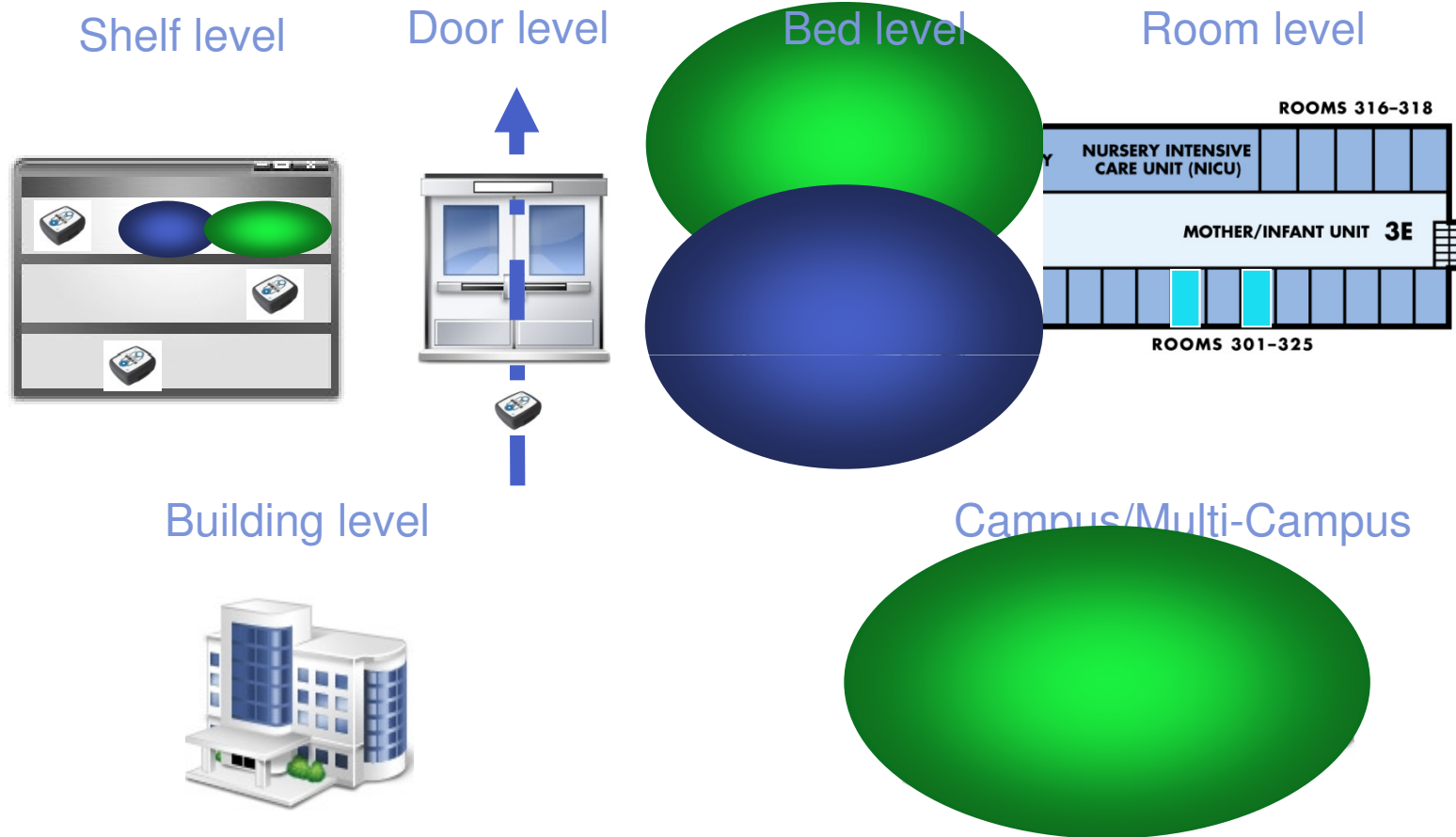
The central part of the interface is a map view of the 'Chandler-7th-floor'. The map shows a grid of rooms, each labeled with an ID such as H-709, H-711, H-713, H-715, H-719, H-731, H-733, H-735, H-737, H-739, H-740, H-738, H-734, H-732, H-751, H-753, H-755, H-757, H-759, H-761, HA7001, and HA700. A blue icon representing a bladder scanner is visible in room H-734. The map includes a vertical zoom slider on the left and a 'Map' tab selected at the top.

On the left side of the interface, there is a 'FIND' panel with a search input field, an 'Attribute' dropdown menu set to 'None', and several other dropdown menus for 'Item Group', 'Item List', 'Map', and 'Zone', all currently set to 'None'. A 'Battery (%)' section shows a range from 0 to 100. A 'Find' button is located at the bottom of this panel.

At the bottom of the interface, there is a 'SAVED FINDS' section. The footer of the application displays 'EKAHAU VISION 1.7.1 © 2009 Ekahau, Inc.' and a status bar at the very bottom shows the system time as 8:16 PM.

# RTLS for Healthcare

## Real-Time-Location Solution

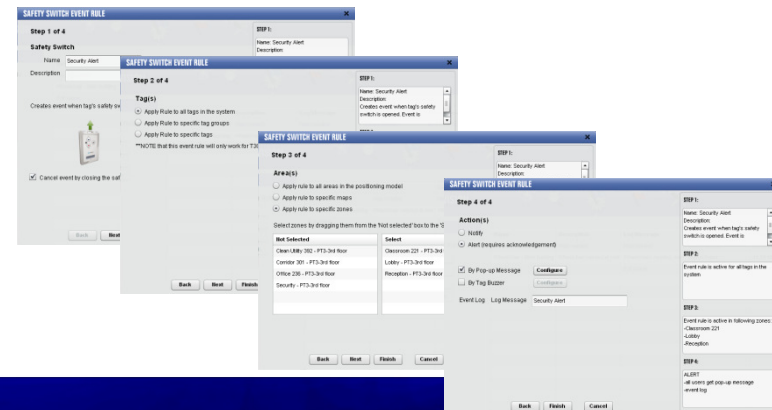
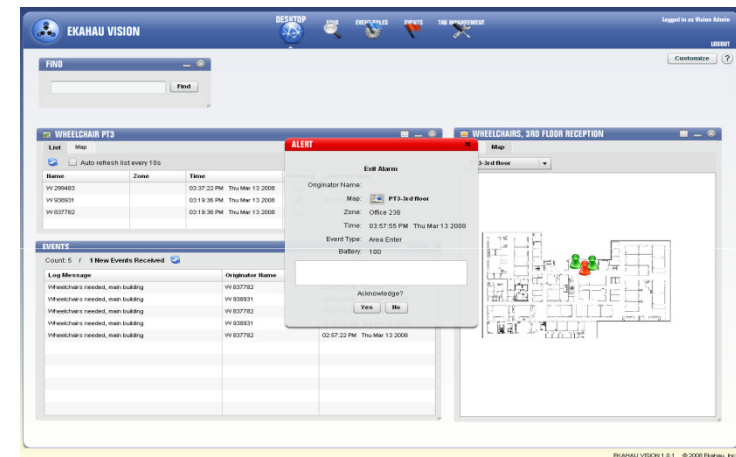


Ekahau software and Ekahau Tags

# Event Rules

Create rules to notify or alert (requires acknowledgement) users when event rule conditions are met

- Create event rules to capture
  - Button press
  - Map or Zone enter / exit
  - Low battery
  - Safety switch
- Web pop-up or LED & ring tone actions
- E-mail



# Rental Reduction

1. August 2008: Rental Cost \$33,809
2. May 2009: Tagging begins, Rental Cost down to \$8900
3. June 2009: Final Phase of Tagging Starts, \$6808
4. August 2009: Final Phase Complete, \$3780

# RFID Success at UK

- Tracking Unused equipment 24-7
- Locating Equipment that Require Preventive Maintenance
- Locating Critical Equipment
- Tracking Scopes for Infection Control
- Rental Cost: FY 08 +\$400,000
- Rental Cost: FY 09 \$48,000

# RFID Success at UK continued

- Accuracy of Equipment Inventory
- Notification of Equipment leaving the Facility
- Set Par Locations of Equipment in Patient Care Area

# YES! Hospitals Need Asset Tracking



USED WHEELCHAIRS - FOR SALE

# RIFD Challenges Since Implementation

- New Technology: New Policies, Education, Winning Support from Staff
- Over Load of New Request: Everyone now wants their stuff tagged

# Use of RFID in the Future

- Patient safety
- Traceability of patients, supplies and equipment
- Monitoring of temperature of supplies during shipment
- Addition of semi-active tags for equipment